

MONTHLY MEMBERSHIP PROGRESS REPORT

LOCATION ILLINOIS

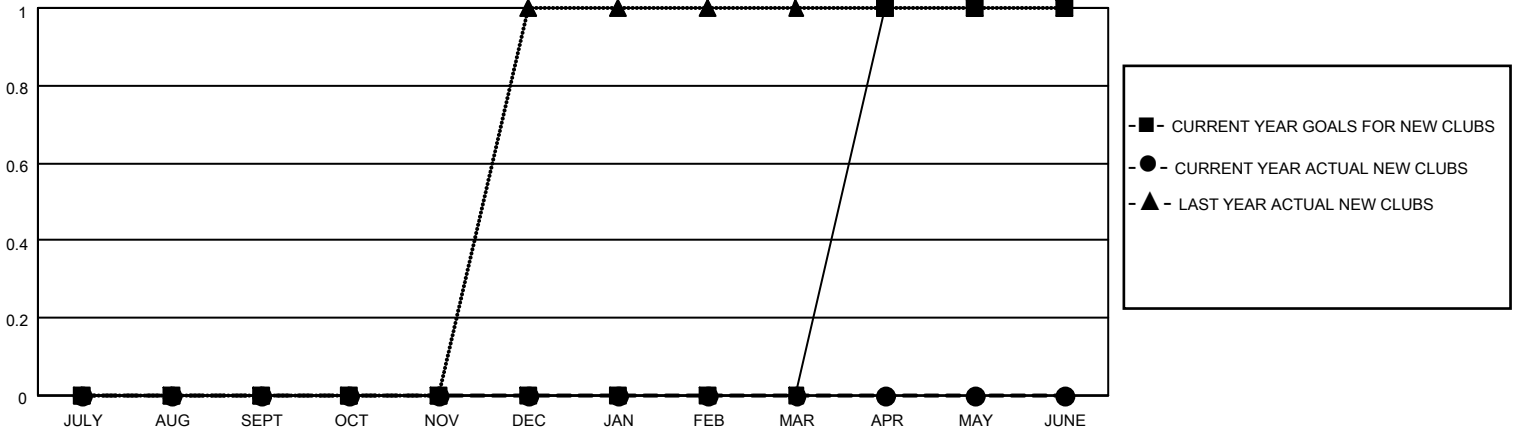
District 1 H

Results as of: 6/30/2022

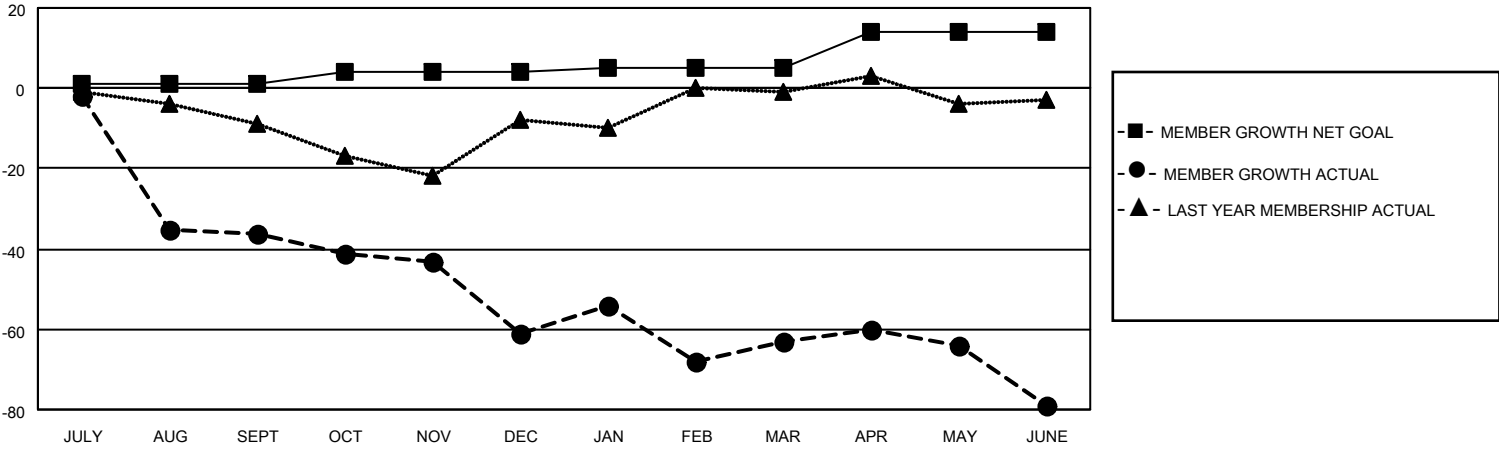
| Clubs | | | |
|-----------------------|---------------|-----------|---------------|
| RESULTS FOR 2021-2022 | | | |
| QUARTER | NEW CLUB GOAL | NEW CLUBS | DROPPED CLUBS |
| JULY/AUG/SEPT | 0 | 0 | 2 |
| OCT/NOV/DEC | 0 | 0 | 0 |
| JAN/FEB/MAR | 0 | 0 | 2 |
| APR/MAY/JUNE | 1 | 0 | 1 |

| Members | | | |
|-----------------------|------------------------|----------------------|---|
| RESULTS FOR 2021-2022 | | | |
| QUARTER | MEMBER GROWTH NET GOAL | MEMBER GROWTH ACTUAL | DROPPED MEMBERS ACTUAL (including transfers) |
| JULY/AUG/SEPT | 1 | 32 | 50 |
| OCT/NOV/DEC | 3 | 18 | 43 |
| JAN/FEB/MAR | 1 | 22 | 24 |
| APR/MAY/JUNE | 9 | 13 | 27 |

GOALS AND ACTUAL NEW CLUBS CUMULATIVE



GOALS AND ACTUAL MEMBERS CUMULATIVE



| | |
|------------------------|------------|
| DROPPED CLUBS: 5 | |
| DROPPED MEMBERS | |
| DECEASED | 11 |
| CLUB CANCELLED | 54 |
| OTHER | 79 |
| TOTAL | 144 |

18 CLUBS OF 39 ADDED 1 OR MORE NEW MEMBERS

[CLICK HERE FOR CUMULATIVE MEMBERSHIP DATA](#)

| <u>GENDER DISTRIBUTION</u> | |
|--|--------------|
| MALE | 654 (73.40%) |
| FEMALE | 237 (26.60%) |
| NON BINARY | 0 (0.00%) |
| PREFER NOT TO ANSWER | 0 (0.00%) |
| TOTAL FAMILY UNIT MEMBERS | 127 |
| FAMILY MEMBERS PAYING HALF DUES | 65 |